



Structured Cabling Solutions

WWW.ICC.COM

CABLE MANAGEMENT SOLUTIONS

RACKS

▪ Distribution Racks	57,60
▪ Cable Management Racks	58,60
▪ Wall Rack	66
▪ Swing Gate Rack	59,66
▪ Vertical Hinged Wall Mount Brackets	66
▪ Hinged Wall Mount Brackets	67

SHELVES

▪ Keyboard Trays	61
▪ Rack Shelves Single and Double	61
▪ Heavy Duty Shelves	61
▪ Vented Shelves Single and Double	62

PANELS

▪ Cable Management Drawer- NEW	64
▪ Metal Ring Panels	62
▪ Metal Interbay Panels	62
▪ Clip Panels	62
▪ Cable Management Ring Panels	63
▪ Cable Management Interbay Panels	63
▪ Cable Management Panel Covers	63
▪ Cable Management Finger Duct Panels	64
▪ Blank Rack Panels	65

CABLE MANAGEMENT

▪ Vertical Rings	64
▪ "L" Brackets	64
▪ Rack Mount Rear Cable Management Bar	65
▪ Extended Cable Management Bracket	65
▪ Cable Channel	65
▪ Screws and Hardware	67

ICC provides a complete line of cable management products to make every installation neat, well organized and secure.

ICC's distribution racks are available in 3, 4, 6, or 7 foot versions, and come in either a black powder coated or polished aluminum finish. For added cable management, vertical cable channels can be added to standard distribution racks.

ICC's cable management racks are made of rugged steel and feature a black powder coating. All rack side rails have openings for cable routing, and provide cable tie anchors in various locations. These racks are available in 4 and 7 foot models.

In addition to floor mounted racks, a variety of wall mount racks and brackets are available to fill specialized applications.

To add to the versatility of the distribution and cable management racks, ICC offers a selection of shelves to support components that do not need to be rack mounted.

Cable management panels are available to support bulk cable or patch cords horizontally or vertically. These panels come with standard metal, or durable plastic rings. Plastic snap-on covers can be added to the plastic panels to create a neat, well organized appearance. Brackets, vertical rings, and management bars round out ICC's Cable Management Solution.

PRODUCTS

TECHNICAL HIGHLIGHTS

FEATURES



Patch panels offer quick and easy interconnections.



Labeling allows quick port identification.



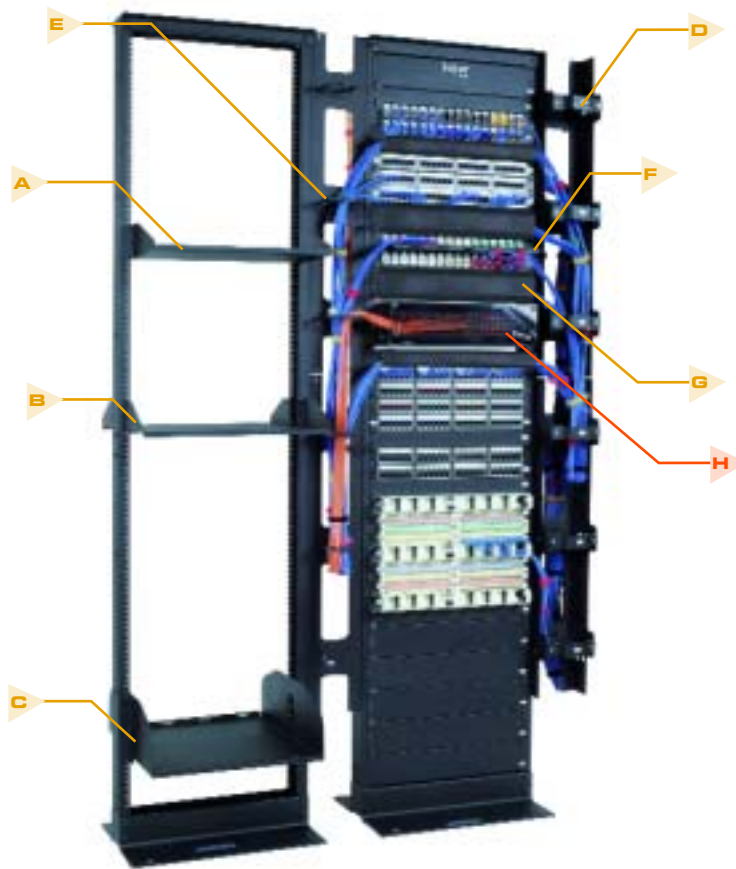
Cable dressing is a simple task when cable management options are installed.



ICC's fiber optic enclosures may be mounted in our distribution racks.

DISTRIBUTION RACK

ICC's EIA standard 19 inch distribution racks are designed to provide maximum configuration flexibility. When optional equipment shelves are installed, the rack provides a platform for peripheral equipment where needed. Made from high-strength aluminum alloy, ICC's distribution racks are lightweight, durable and have excellent grounding characteristics. The racks are available in black powder coated and polished aluminum finish. Racks are designed with standard 12-24 roll-tapped threading on both sides.



- | | | | |
|----------------------------|------------------------------|---------------------------------------|---------------------------------|
| A Single shelf | B Double shelf | C Heavy duty shelf | D Optional cable channel |
| E Vertical CM rings | F Extended CM bracket | G Cable management panel cover | H Fiber enclosure |

Product Referencing Chart

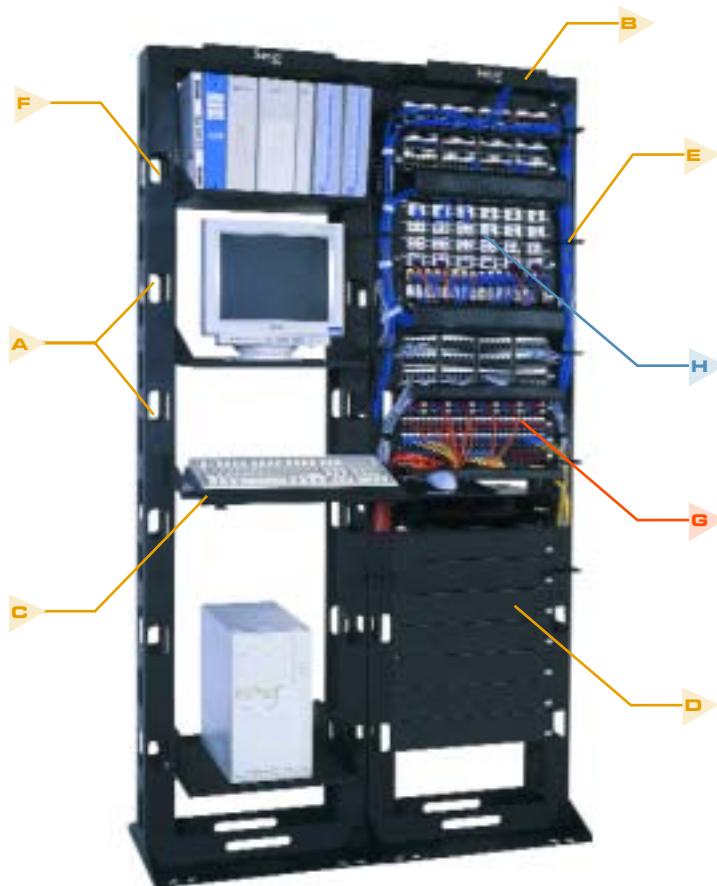
FOS
Starting Pg. 46

PRODUCTS

TECHNICAL HIGHLIGHTS

CABLE MANAGEMENT RACK

ICC's cable management rack incorporates a number of features that simplify cable routing, and provide a neat, organized appearance. The two top cable troughs support and route large amounts of cable, while maintaining minimum cable bend radius. The all-steel construction makes it ideal for use with heavy electronic equipment. The rack also accommodates 19 inch panels. ICC's cable management rack complies with EIA-310-D spacing standards. Package includes mounting hardware.



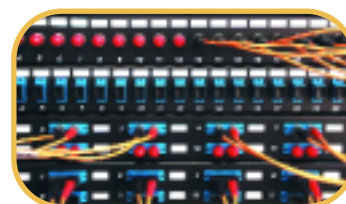
FEATURES



Cable management rings facilitate easy cable routing.



IC108 Elite series bezels installed in a IC108 blank patch panel.



Fiber optic patch panel mounted in a cable management rack.



Multiple entry holes allow cables to enter from the back or side of the cable management rack.

- A** Cable entry holes
- B** Top cable management trough included with rack
- C** Slide-in keyboard drawer and mouse shelf
- D** Blank rack panels
- E** 3.50 inch cable management ring panel
- F** 6.0 inch deep x 3.0 inch wide cable channels
- G** Fiber optic patch panel
- H** Blank patch panels accept IC108 Elite bezels

Product Referencing Chart

- MPS** Starting Pg. 8
- FOS** Starting Pg. 46

PRODUCTS

TECHNICAL HIGHLIGHTS

FEATURES



Rack door opens easily after cable routing.



With the rack fully open, punching down can be accomplished on the back of patch panels.



Cable management rings provide stable cable routing points.



VELCRO® tie loops firmly restrain cable routing.

SWING GATE RACK

ICC's wall-mount swing gate rack simplifies installation of equipment by allowing right or left swing out. With the rack's innovative "positive stop" feature, punching down can be easily accomplished with the rack fully open. Multiple tie points assist in securing routed cables, and in giving the installation a well dressed appearance. The swing gate rack accepts all standard 19 inch patch panels, cable management panels, and fiber optic rack mount enclosures. The swing gate rack's durable, long-lasting Oilite hinge bushings promote ease of opening and balanced load distribution. Package includes all mounting hardware necessary for a complete installation.



- A** Oilite hinge bushings for durability
- B** Multiple cable routing tie points
- C** Swings open left or right for easy access
- D** Durable black powder finish
- E** Positive locking mechanism
- F** Heavy duty and high capacity
- G** Accepts standard 19 inch patch panels and all 19 inch rack mount accessories
- H** Fiber optic rack mount enclosure

Product Referencing Chart

- CXS** Starting Pg. 22
- FOS** Starting Pg. 46

PRODUCTS



19 Inch Distribution Racks

EIA standard 19 inch racks are designed for the ultimate in configuration flexibility. The 6061-T6 high-strength aluminum alloy makes ICC racks lightweight and durable, with excellent grounding characteristics. The 19 inch standard racks include:

- Roll-tapped threading (12-24 standard) on both front and back
- Two angled, top cross-members for maximum strength
- 30 high-quality, pilot point screws (12-24 x 5/8 inch)
- Pre-installed steel-threaded grommets minimize stripping during assembly
- Slotted hole design on the base for easy adjustment
- Compatible with any cabinet or rack that conforms to EIA-310-D spacing standard specifications (5/8 x 5/8 x 1/2 inch)



ITEM NUMBER	DESCRIPTION
-------------	-------------

ICCMSR1936	3 ft. (36 in.) Rack, Aluminum, Black
ICCMSR1948	4 ft. (48 in.) Rack, Aluminum, Black
ICCMSR1972	6 ft. (72 in.) Rack, Aluminum, Black
ICCMSR1984	7 ft. (84 in.) Rack, Aluminum, Black

ICCMSA1936	3 ft. (36 in.) Rack, Aluminum, Polished
ICCMSA1948	4 ft. (48 in.) Rack, Aluminum, Polished
ICCMSA1972	6 ft. (72 in.) Rack, Aluminum, Polished
ICCMSA1984	7 ft. (84 in.) Rack, Aluminum, Polished



19 Inch Cable Management Racks

ICC's standard 19 inch cable management rack has an all-steel construction, making it ideal for use with heavy data or electronic equipment. It has integral 6 inch cable channels along both sides of the rack to manage and conceal bulk cable vertically along the inside of the rack. The rack has several cable tie anchor points throughout the cable channel to secure cable bundles with VELCRO® ties. The unique 24-inch-overall design allows the rack to accommodate raised floor configurations and support heavy data and electronic equipment. Cable management rack features include:

- Extruded 10-32 tapped mounting holes on front and rear of rack, which allow screws to firmly secure equipment
- Two top cable troughs which support and route large amounts of cable, maintaining minimum bend radius
- Cable Management rings which mount to the front or rear of the rack to provide additional vertical organization
- A slotted hole design on the base for easy rack adjustment
- Assembly holes with steel threads which minimize cable stripping during assembly
- 10-32 mounting screws
- Compatibility with 19 inch width panels and compliance with EIA-310-D spacing standard specifications (5/8 x 5/8 x 1/2 inch)

ITEM NUMBER	DESCRIPTION
-------------	-------------

ICCMSCMR48	4 ft., (48 in.) Rack, Steel, Black
ICCMSCMR84	7 ft., (84 in.) Rack, Steel, Black



PRODUCTS



Keyboard Tray with Mouse Shelf

This keyboard tray is equipped with a built-in mouse shelf that can be pulled out to either the right or the left side. The mouse shelf retracts out of the way when not in use. ICC's Mouse Pad and 12-24 x 5/8 inch pilot point rack screws are included for use with distribution racks. When using with cable management racks, use 10-32 x 5/8 inch screws.

ITEM NUMBER	DESCRIPTION
-------------	-------------

ICCMSRKP10	Keyboard tray with mouse shelf, 2 RMS
------------	---------------------------------------



Keyboard Tray

The keyboard tray slides in and out on ball bearing tracks for easy access. The tray is made of high-quality steel and is coated with a durable black powdered finish. Package includes 12-24 x 5/8 inch pilot point rack screws, for use with distribution racks. When using with cable management racks, use 10-32 x 5/8 inch screws.

ITEM NUMBER	DESCRIPTION
-------------	-------------

ICCMSRKS10	Keyboard Tray, 3 RMS
------------	----------------------



Rack Shelves

These shelves are specially designed to exceed the practical weight requirements of any telecommunication room. The single shelf unit easily accommodates bulky equipment. The double shelf unit is perfect for bigger and heavier equipment including computers, modems, and multiplexers. All shelf units are coated with a durable black powdered finish. Package includes 12-24 x 5/8 inch pilot point rack screws, for use with distribution racks. When using with cable management racks, use 10-32 x 5/8 inch screws.

ITEM NUMBER	DESCRIPTION
-------------	-------------

ICCMSRSF10	10 in. Deep, Single Shelf, (75 lbs. capacity), 2 RMS
ICCMSRSF15	15 in. Deep, Single Shelf, (75 lbs. capacity), 3 RMS
ICCMSRDS20	20 in. Deep, Double Shelf, (125 lbs. capacity), 2 RMS
ICCMSRDS30	30 in. Deep, Double Shelf, (125 lbs. capacity), 3 RMS

250 LBS. LOAD CAPACITY



Heavy Duty Shelves

These heavy duty equipment shelves are designed to hold up to 250 lbs. each, making them ideal for mounting heavier data or electronic equipment. The rack mounting brackets are adjustable, making the shelves compatible with either 3 inch or 6 inch rack rails. Package includes 12-24 x 5/8 inch pilot point rack screws, for use with distribution racks. When using with cable management racks, use 10-32 x 5/8 inch screws.

ITEM NUMBER	DESCRIPTION
-------------	-------------

ICCMSHDS20	20 in. Deep, Heavy Duty Equipment Shelf, (250 lbs. capacity), 3 RMS
------------	---

PRODUCTS

50 LBS. LOAD CAPACITY



100 LBS. LOAD CAPACITY



Vented Shelves

These vented shelves are designed to provide air flow to ventilate mounted equipment. The vented shelves are made of high-quality steel and are coated with a durable black powder coated finish. Package includes 12-24 x 5/8 inch pilot point rack screws, for use with distribution racks.

ITEM NUMBER	DESCRIPTION
ICCMSRSV10	10 in. Deep, Single Shelf, Vented, 2 RMS
ICCMSRSV15	15 in. Deep, Single Shelf, Vented, 3 RMS
ICCMSRDV20	20 in. Deep, Double Shelf, Vented, 2 RMS
ICCMSRDV30	30 in. Deep, Double Shelf, Vented, 3 RMS

Metal Ring Panels

The 1.75 inch panel combines four horizontal and two vertical distribution rings for patch cord organization. The 3.5 inch panel combines four horizontal and four vertical distribution rings for patch cord organization. Mounting hardware not included.

ITEM NUMBER	DESCRIPTION
ICCMSCMP31	1 RMS, 1.75 in. x 19 in., 4 Horiz., 2 Vert., Ring Panel
ICCMSCMP32	2 RMS, 3.5 in. x 19 in., 4 Horiz., 4 Vert., Ring Panel

Metal Interbay Panels

The five horizontal rings on our 1.75 inch and 3.5 inch interbay panels reduce cable bundle congestion and tension. Large ring openings allow easier cable access at the front or the back of the distribution rack. Mounting hardware not included.

ITEM NUMBER	DESCRIPTION
ICCMSCMP51	1 RMS, 1.75 in. x 19 in., 5 Horiz. Ring Panel
ICCMSCMP52	2 RMS, 3.75 in. x 19 in., 5 Horiz. Ring Panel

Clip Panels

The 1.75 inch panel combines two vertical distribution rings with 24 individual routing clips for patch cord organization and guidance. The 3.5 inch panel combines four horizontal and four vertical distribution rings with 24 individual routing clips for patch cord organization and guidance. Mounting hardware not included.

ITEM NUMBER	DESCRIPTION
ICCMSCMP41	1 RMS, 1.75 in. x 19 in., 2 Vert. Rings, 24 Plastic Clips
ICCMSCMP42	2 RMS, 3.5 in. x 19 in., 4 Vert., 4 Horiz. Rings, 24 Plastic Clips



PRODUCTS



Cable Management Ring Panels

The ring panel design is used to manage bulk cable or patch cords horizontally as well as vertically. The panel is configured with three rings for horizontal cable management and one ring at each end of the panel for vertical cable management. The lightweight yet sturdy plastic ring design adds flexibility. The panels feature VELCRO® tie anchoring points allowing cable to be neatly secured. Variable entry options are available via feedthrough holes, that allow cable to be loaded from either the front or rear of the panel. Vertical cable management rings do not extend past the 19 inch panel width, making them ideal for use in rack enclosures, or on freestanding racks where space is limited. The panels conform to EIA-310-D spacing standard. Cable concealment is also available with optional cable management covers (ICCMSCMC01 or ICCMSCM02), which give the installation a neat, clean and well-organized appearance. Package includes 12-24 x 5/8 inch pilot point rack screws, for use with distribution racks.

ITEM NUMBER	DESCRIPTION
-------------	-------------

ICCMSCMA31	1 RMS, 1.75 in. x 19 in., Ring Panel
ICCMSCMA32	2 RMS, 3.50 in. x 19 in., Ring Panel

Cable Management Interbay Panels

The interbay panel design is used to manage bulk cable or patch cords horizontally. The panel is configured with five rings. The lightweight yet sturdy plastic ring design adds flexibility. The panels feature VELCRO® tie anchoring points. Variable entry options are available via feedthrough holes, which allow cables to be loaded from either the front or rear of the panel. Outer cable management rings do not extend past the 19 inch panel width, making them ideal for use in rack enclosures or on freestanding racks where space is limited. The panels conform with EIA-310-D spacing standard. Cable concealment is also available with optional cable management covers (ICCMSCMC01 and ICCMSCMC02), which give the installation a neat, clean and well-organized appearance. Package includes 12-24 x 5/8 inch pilot point rack screws, for use with distribution racks.

ITEM NUMBER	DESCRIPTION
-------------	-------------

ICCMSCMA51	1 RMS, 1.75 in. x 19 in., Interbay Panel
ICCMSCMA52	2 RMS, 3.50 in. x 19 in., Interbay Panel

Cable Management Panel Covers

These cable management panel covers give any installation a neat, clean and well-organized appearance. The covers are simple to snap on and off for addition or removal of cable. 1.75 inch (1 RMS) cable management panel covers can be used with ICCMSCMA31 or ICCMSCMA51. 3.50 inch (2 RMS) cable management panel covers can be used with ICCMSCMA32 or ICCMSCMA52.

ITEM NUMBER	DESCRIPTION
-------------	-------------

ICCMSCMC01	1 RMS, 1.75 in., Panel Cover
ICCMSCMC02	2 RMS, 3.50 in., Panel Cover

PRODUCTS



Cable Management Finger Duct Panels

Finger duct panels are compatible with all ICC racks and wall mount brackets. Slotted ducts allow horizontally routed cable and patch cords to be placed vertically to designated ports along the width of the rack. Panels include a cover to conceal cables. Configurations are available for front and front & rear cable management. Package includes 12-24 x 5/8 inch pilot point rack screws, for use with distribution racks.

ITEM NUMBER	DESCRIPTION
ICCMSCMA41	Cable Management Panel w/ Finger Ducts on Front, 1 RMS
ICCMSCMA42	Cable Management Panel w/ Finger Ducts on Front, 2 RMS
ICCMSCMA61	Cable Management Panel w/ Finger Ducts on Front & Rear, 1 RMS
ICCMSCMA62	Cable Management Panel w/ Finger Ducts on Front & Rear, 2 RMS

COMING IN
2002
3RD QUARTER



Cable Management Drawer

ICC's secured rack mounted cable management drawer is useful for storage of equipment, tools, manuals, CD software, etc.

ITEM NUMBER	DESCRIPTION
ICCMSCMDR2	Cable Management Drawer with Lock, 2 RMS
ICCMSCMDR4	Cable Management Drawer with Lock, 4 RMS

Vertical Rings

Vertical cable management rings provide high flexibility for front or back vertical cable management. These rings are typically mounted directly to the vertical rails of a 19 inch rack, or on the sides of any ICC hinged wall mount bracket, providing vertical cable management and routing along the sides. Package includes 12-24 x 5/8 inch rack screws, for use with distribution racks.

ITEM NUMBER	DESCRIPTION
ICCMSCMPR1	Single Cable Management Ring, 1.70 in.
ICCMSCMPR2	Single Cable Management Ring, 3 in.
ICCMSCMPR3	Double Cable Management Ring, 3 in.
ICCMSCMPR4	Double Cable Management Ring, 6 in.

"L" Brackets

"L" Brackets are manufactured with a strong lightweight aluminum that easily mounts to any standard EIA-compliant hole spacing. The brackets come in either regular aluminum or powder-coated black, and have cutouts that make it easy to incorporate VELCRO® or plastic cable ties for custom vertical or horizontal cable management.



ITEM NUMBER	DESCRIPTION
ICCMSCMPL1	Standoff cable tie bracket, Aluminum, Black
ICCMSCMPL2	Standoff cable tie bracket, Aluminum, Polished



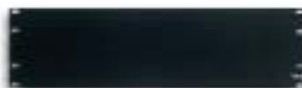
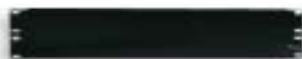
Structured Cabling Solutions

WWW.ICC.COM

PRODUCTS

Blank Panels

Blank panels are designed to fill the open space between system panels on a standard 19 inch rack to enhance the appearance. Mounting hardware not included.



ITEM NUMBER	DESCRIPTION
-------------	-------------

ICCMSCMPB1	1 RMS, 1.75 in. x 19 in., Blank Panel
ICCMSCMPB2	2 RMS, 3.50 in. x 19 in., Blank Panel
ICCMSCMPB3	3 RMS, 5.25 in. x 19 in., Blank Panel

Rack Mount Rear Cable Management Bar

The rack mount rear cable management bar can be mounted directly to the rack. It has cable tie anchor points for VELCRO® ties. Mounting hardware not included.



ITEM NUMBER	DESCRIPTION
-------------	-------------

ICMPP35RMB	19 in. Rack Mount Rear Cable Management Bar
------------	---

Extended Cable Management Bracket

The extended cable management bracket is designed to provide substantially more strain relief for cabling, especially shielded cabling. The bracket can be mounted on the rear of the rack to provide cable support, or it can be mounted to the front of the rack, over a patch panel, to provide management and support to patch cords. At each end of the cable management bracket, there is a 1 inch bend radius to protect cable when routed to a vertical position. The bracket is equipped with several VELCRO® tie anchor points. Package includes 12-24 x 5/8 inch rack screws, for use with distribution racks.



ITEM NUMBER	DESCRIPTION
-------------	-------------

ICCMSE45RB	19 in. Extended Cable Management Bracket
------------	--

Cable Channel

The ICC vertical cable channel is a rack accessory featuring swivel latches and anchoring points for either cable ties or VELCRO® ties, and provides vertical cable management. The cable channel comes in 3-foot sections, with mounting holes that allow it to be attached to any size ICC rack using the provided bolts. This is a perfect item to use between racks where there is a large amount of cable being routed and terminated. The cable channel has other mounting features that allow two sections to be fastened together to make a longer channel. The cable channel includes a back-to-back mounting option.



ITEM NUMBER	DESCRIPTION
-------------	-------------

ICCMSCC3BK	3 ft., Aluminum, Black
ICCMSCC3SV	3 ft., Aluminum, Polished

PRODUCTS



Wall Mount Racks

These self-squaring racks can be used to mount virtually any data or telecommunications component. The all-steel wall mount rack is quick and easy to assemble, and comes in a durable black powder coated finish. The racks are 18 inch deep and are available in 8, 15, or 30 rack mount spaces. All wall mount racks feature 125 lbs. load capacity. Thirty 12-24 x 5/8 inch rack screws included. 30 RMS version comes with 50 screws.

ITEM NUMBER	DESCRIPTION
ICCMSWMR08	8 RMS, 19.75 in. W x 17.75 in. H x 18 in. D
ICCMSWMR15	15 RMS, 19.75 in. W x 30 in. H x 18 in. D
ICCMSWMR30	30 RMS, 19.75 in. W x 56.25 in. H x 18 in. D



CLOSED POSITION



OPEN FOR EASY ACCESS

Swing Gate Racks

The open wall-mount design of the swing gate rack allows installers to swing equipment out once the equipment is mounted on the rack, simplifying wiring tasks. Cable tie points and VELCRO® tie loops can neatly organize routed cable throughout the rack, while a 150 lb. capacity provides enough strength to hold heavy equipment. Punching down can be accomplished while the unit is completely opened. The swing gate wall mount rack comes in 18 inch depths, and 12 and 20 rack mount space sizes with a black powder coated finish, and can be mounted to swing open left or right. Twenty-five 10-32 x 5/8 inch rack screws and VELCRO® ties included. 20 RMS versions comes with 50 screws.

ITEM NUMBER	DESCRIPTION
ICCMSSGR21	12 RMS, 20.5 in. W x 27 in. H x 19 in. D
ICCMSSGR22	20 RMS, 20.5 in. W x 41 in. H x 19 in. D



CLOSED POSITION



Vertical Hinged Wall Mount Brackets

The vertical hinged wall mount brackets are ideal for wall-mounting patch panels, hubs, routers, switches and other networking equipment. The brackets offer rear access which facilitates punching down and simplifies installation. There are cable tie points throughout the vertical hinged bracket for cable management. The sturdy all-steel construction is finished in a durable black powder coat. Offered in a 12 inch depth of 6 and 8 RMS. Also available is an 8 RMS 16 inch depth version. Package includes twenty-five 10-32 x 5/8 inch rack screws, and VELCRO® ties.

ITEM NUMBER	DESCRIPTION
ICCMSVHB06	6 RMS, 19.75 in. W x 12.75 in. H x 12 in. D (40 lbs. load capacity)
ICCMSVHB08	8 RMS, 19.75 in. W x 16.25 in. H x 12 in. D (60 lbs. load capacity)
ICCMSVHB18	8 RMS, 19.75 in. W x 16.25 in. H x 18 in. D (60 lbs. load capacity)

PRODUCTS



Hinged Wall Mount Brackets

The 19 inch wide wall mount brackets have a 6 inch depth to provide easy cable management. The wall mount brackets also have a rear cable entry opening and hinged panel mount tab design which provide easy cable access. Cable tie anchors secure cable bundles with VELCRO®. Package includes 10-32 x 5/8 inch rack screws (4 screws per RMS).

ITEM NUMBER	DESCRIPTION
-------------	-------------

ICCMShB1RS	1 RMS, 19 in. W x 1.75 in. H x 6 in. D
ICCMShB2RS	2 RMS, 19 in. W x 3.5 in. H x 6 in. D
ICCMShB3RS	3 RMS, 19 in. W x 5.25 in. H x 6 in. D
ICCMShB4RS	4 RMS, 19 in. W x 7 in. H x 6 in. D
ICCMShB6RS	6 RMS, 19 in. W x 10.5 in. H x 6 in. D
ICCMShB8RS	8 RMS, 19 in. W x 14 in. H x 6 in. D

Pilot Point Rack Screws

The 12-24 x 5/8 inch pilot point screws are used on distribution racks.

ITEM NUMBER	DESCRIPTION
-------------	-------------

ICACSS01xx*	12-24 x 5/8 in. pilot point rack screws, 30 pcs./bag
xx*= SV, BK	

Rack Screws

The 10-32 x 5/8 inch rack mounting screws for use on any CMS wall mount product, or cable management rack.

ITEM NUMBER	DESCRIPTION
-------------	-------------

ICACSS02BK	10-32 x 5/8 in. rack screws, 30 pcs./bag , Black
------------	---

Distribution Rack Hardware Replacement Package

The package contains twelve No.3/8-16 bolts and washers for rack assembly, plus thirty 12-24 x 5/8 inch pilot point screws.

ITEM NUMBER	DESCRIPTION
-------------	-------------

ICACSBWSxx*	3/8-16 bolt and washer, 12 sets/bag and 12-24 x 5/8 in. pilot point screws, 30 pcs./bag
xx*= SV, BK	

Grounding Kit

The kit includes a universal grounding terminal with all necessary mounting hardware. The kit can be used to terminate grounding cables to panels and racks.

ITEM NUMBER	DESCRIPTION
-------------	-------------

ICACSGKS00	Grounding Kit
------------	---------------